

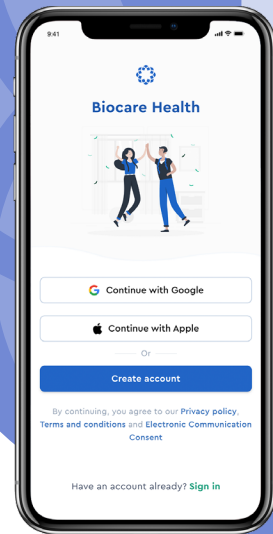


# biokit™ QUICK GUIDE

DIGITAL THERMOMETER

BLOOD PRESSURE MONITOR

PULSE OXIMETER



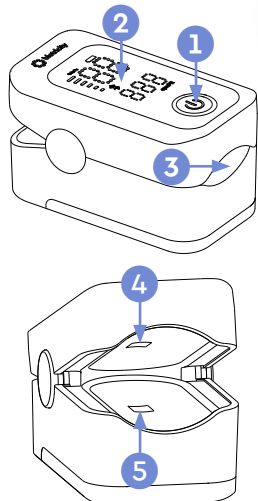
available on iOS & Android

## DOWNLOAD THE BIOCARE HEALTH APP



App screens may appear differently in more current versions of the Biocare Health App.

### PULSE OXIMETER



#### COMPONENTS

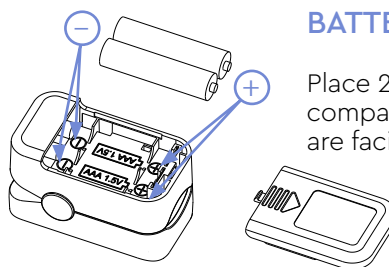
1. Power Button
2. LED Display
3. The Probe
4. Light Beam Sensor
5. Light Emitting Diode

#### PRE-USE CHECK LIST

Discontinue use if any of the following issues arise:

1. Broken **POWER BUTTON**
2. Drained batteries (replace batteries)
3. Cracked enclosure case

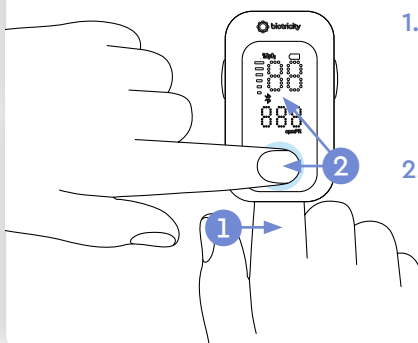
### BATTERY INSTALLATION



Place 2 AAA batteries into the battery compartment as shown. Ensure batteries are facing in the correct direction.

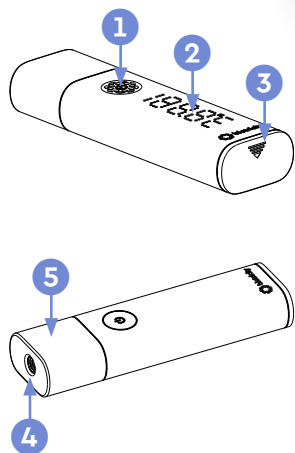
**NOTE:** Remove batteries when not using Biokit Pulse Oximeter for extended periods of time.

### HEART RATE AND SPO2 MEASUREMENT



1. Completely insert one finger into the **PROBE**, with fingernail facing upward (toward the **LED DISPLAY**).
2. Press the **POWER BUTTON** and wait for data to appear on the **LED DISPLAY**.

### DIGITAL THERMOMETER



#### COMPONENTS

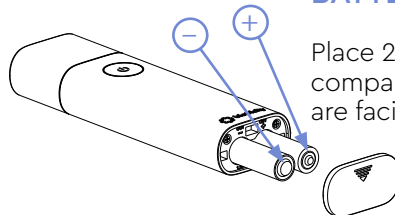
1. Power Button
2. Lattice Screen
3. Battery Cover
4. Sensor
5. Probe Cover

#### PRE-USE CHECK LIST

Discontinue use if any of the following issues arise:

1. Broken **POWER BUTTON** or **SENSOR**
2. Drained batteries (replace batteries)
3. Cracked enclosure case

### BATTERY INSTALLATION

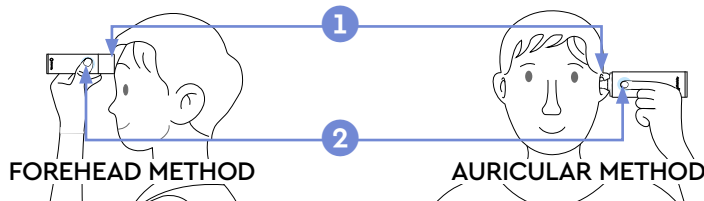


Place 2 AAA batteries into the battery compartment as shown. Ensure batteries are facing in the correct direction.

**NOTE:** Remove batteries when not using Biokit Digital Thermometer for extended periods of time.

### TEMPERATURE MEASUREMENT

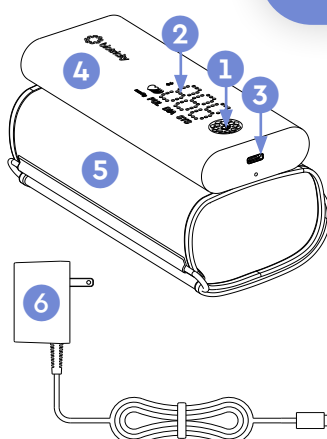
1. **FOREHEAD METHOD:** With **PROBE COVER ON** and **POWER ON**, hold the **SENSOR** close to the forehead as shown **~(or)~**  
**AURICULAR METHOD:** With **PROBE COVER OFF** and **POWER ON**, gently insert the probe into the auricular (ear) cavity as shown.
2. Press the **POWER BUTTON** and wait for data to appear on the **LATTICE SCREEN**.



FOREHEAD METHOD

AURICULAR METHOD

### BLOOD PRESSURE MONITOR



#### COMPONENTS

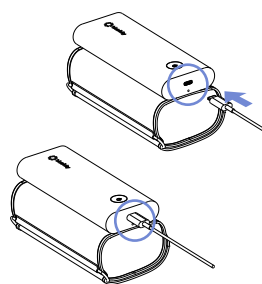
1. Power Button
2. Display Area
3. Charging Port
4. Main Body
5. Arm Cuff
6. AC Wall Charger

#### PRE-USE CHECK LIST

Discontinue use if any of the following issues arise:

1. Broken **POWER BUTTON**
2. Loose (worn out velcro) or air leakage from **CUFF**
3. Cracked enclosure case

### CHARGING

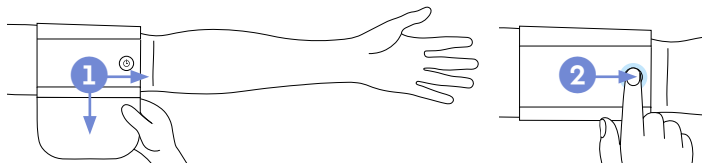


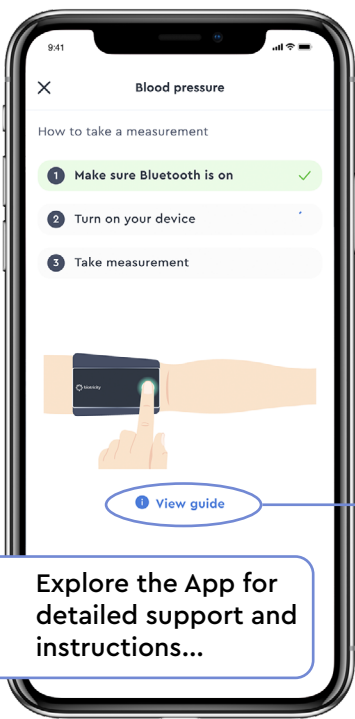
Connect the supplied **AC WALL CHARGER\*** to the **CHARGING PORT**. Plug the other end of the AC Wall Charger into a wall outlet (110 VAC/60Hz). The battery icon on the **DISPLAY AREA** will blink to indicate charging.

\*Only use the supplied Charger.

### BLOOD PRESSURE MEASUREMENT

1. Wrap **ARM CUFF** around the upper arm, 1-2 cm above the elbow directly against the skin. Ensure the **DIRECTION INDICATORS** are properly oriented.
2. Press the **POWER BUTTON** and wait for compression process to complete. Data will appear in the **DISPLAY AREA**.





Explore the App for detailed support and instructions...

## THE BIOCARE HEALTH APP

You can use your Biokit together with a connected mobile device and the **Biocare Health App** to input your daily information and update your personal health data.

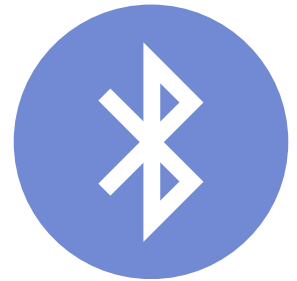
Biokit will measure and update these important vitals in the App:

- BLOOD PRESSURE
- HEART RATE
- SPO2
- BODY TEMPERATURE

Be sure to review the in-app guides on how to take measurements with each Biokit device.

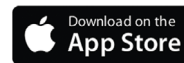
*App screens may appear differently in more current versions of the Biocare Health App.*

## IMPORTANT:



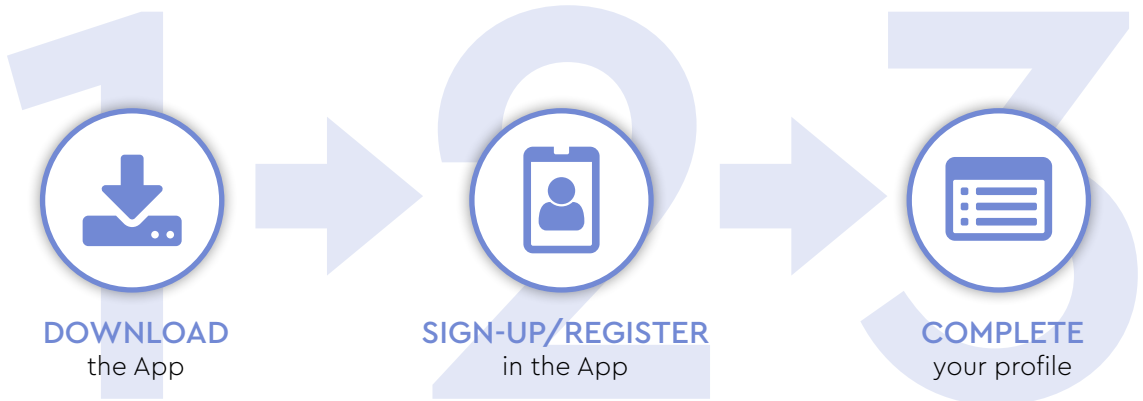
MAKE SURE YOUR PHONE'S BLUETOOTH IS TURNED ON

DOWNLOAD THE BIOCARE HEALTH APP



## THE BIOCARE HEALTH APP

Using the Biocare Health App couldn't be any easier, and it is available for use with Apple & Android devices. Just visit your preferred store and:



Have questions or concerns about Biokit or Biocare Health? Contact us today:

1.800.590.4155  
info@biotricity.com



Biotricity Inc.  
203 Redwood Shores Pkwy  
Suite 600  
Redwood City, CA 94065  
1.800.590.4155

- biotricity.com
- info@biotricity.com
- @biotricity\_inc
- biotricity inc
- biotricity inc